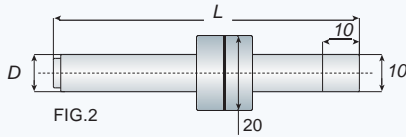
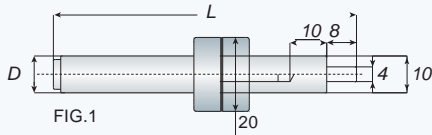


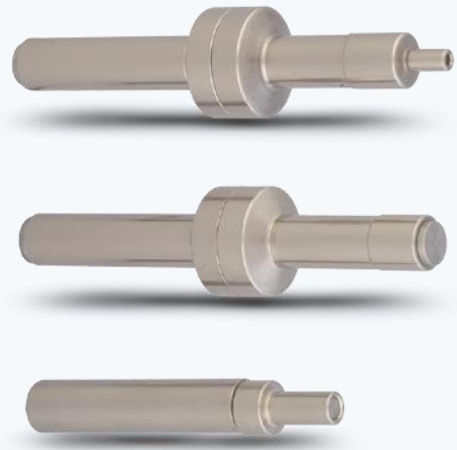
Mechanical Type

기계적인 유형



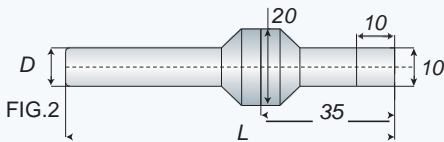
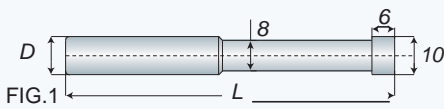
Model No.	FIG.	D	L	Weight (kg)
ACCU 10-4	1	10	90	0.10
ACCU 10	2	10	82.8	0.10
ACCU 106	3	10	65	0.05

Unit: mm



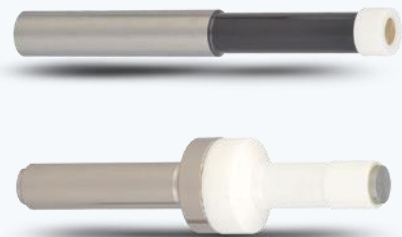
Ceramic Type

세라믹유형



Model No.	FIG.	D	L	Weight (kg)
ACCE-1010	1	10	86	0.05
ACCE-1020	2	10	83	0.10

Unit: mm



- Nonmagnetic and made of ceramic.
- 비자성이며 세라믹으로 만들어졌습니다.