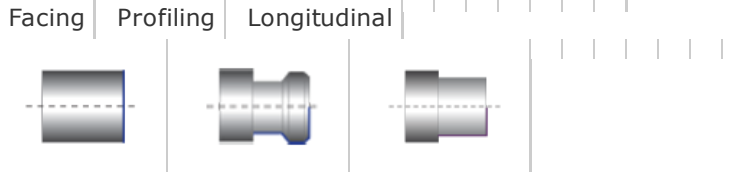
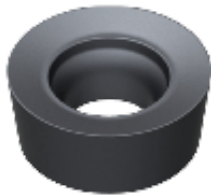


APPLICATION



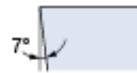
GEOMETRY



R C M T



Shape



Clearance Angle



Tolerance

8 ± 0.13
For $l = 06/08/10$, $d \pm 0.05$ $m \pm 0.08$
For $l = 12$, $d \pm 0.08$ $m \pm 0.13$



Fixing Chip breaker

Product designation	Catalog Nr.	l	s	r	Tool Holders	Cutting Data			
RCMT 0602 M0 LT 10	T0000090	06	2.38	3					
RCMT 0803 M0 LT 10	T0000091	08	3.18	4					
RCMT 10T3 M0 LT 10	T0000092	10	3.97	5					
RCMT 1204 M0 LT 10	T0000093	12	4.76	6					
Round inserts with positive Rake angle and excellent edge resistance	Suitable for Profiling operations of Mill rolls and Aerospace parts								

Application Guide	Finishing	Medium	Roughing / Interrupted cut
RCMT 0602 M0 LT 10			
RCMT 0803 M0 LT 10			
RCMT 10T3 M0 LT 10			
RCMT 1204 M0 LT 10			

<p>Finishing: d.o.c. = 0.30 - 1.50 mm fn = 0.08 - 0.20 mm/rev</p>	<p>Medium: d.o.c. = 0.70 - 4.50 mm fn = 0.15 - 0.45 mm/rev</p>	<p>Roughing: d.o.c. = 3.00 - 7.00 mm fn = 0.35 - 0.70 mm/rev</p>	<p> Good  Acceptable  Not Recommended</p>
---	--	--	---

			
---	--	--	--

Lamina Technologies SA - Rue Pythagore, 2 - 1400 Yverdon-les-Bains, Switzerland - Tel: +41 24 423 55 55 - info@lamina-tech.ch